

Smart Wall Socket



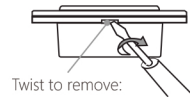
Features

1. High quality crystal tempered glass panel design, never fade.
2. Blue and Red color LED indicator on the panel .
3. Check and Control the Smart Wall Socket by Mobile APP .
4. Backlight indicator ON/OFF can be set by mobile APP .
5. You can set whether to keep the memory function after power off by mobile App : power-off/Power-on/memory of power-off
6. Support Amazon Alexa and Google Assistant etc.

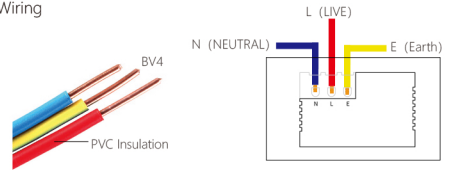
- Page 1 -

Installation

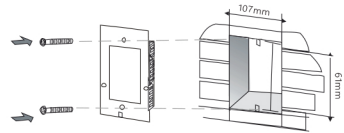
1. Open the front cover by a small flat screwdriver



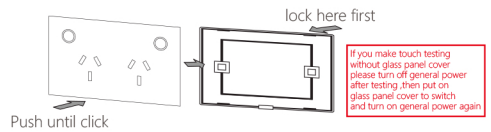
2. Wiring



3. Fix screws



4. Cover the panel and connect the power.



- Page 2 -

Please scan QR code below to download APP

You can also download "Smart Life" App from the Apple Store



Smart Life App

If turn on the Bluetooth of mobile phone, it will be configured more quickly

How to configure switch with Smart Life APP ?

Mode 1: Power on the device and confirm indicator is blinking slowly .Then make configuration operations according to the APP's guidelines.

Mode2: Hold any button of panel for 5s until the indicator is blinking slowly. Then make configuration operations according to the APP's guidelines.

How to remove the device from the APP ?

Solution 1: Remove device from APP interface directly

Solution 2: Hold any button of panel for 5s

Attention: Configure mode exit after 3min no operation

Specification:

Dimension: 120*72*40MM
Voltage: 110-240V AC/50-60Hz
Output: 10A

- Page 3 -

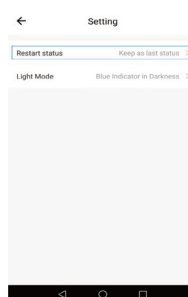
Warning

1. please installed by certified electrician.
2. Please turn off general power before installation .

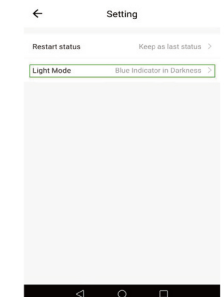
Warranty

This warranty covers defects in manufacturing that arise from the correct use of the device. It is limited to defects in materials or workmanship and does not cover damage caused by abuse, misuse, unauthorised modification, power surge damage or extreme heat or cold or corrosive environments. The warranty also does not cover the normal wear and tear on covers, cases, housings, connectors and accessories. The warranty does not apply to any product with missing, altered or defaced serial numbers. Your products come with a 12 month manufacturer's warranty as standard.

Power off memory setting



Backlight indicator ON/OFF setting



- Page 4 -